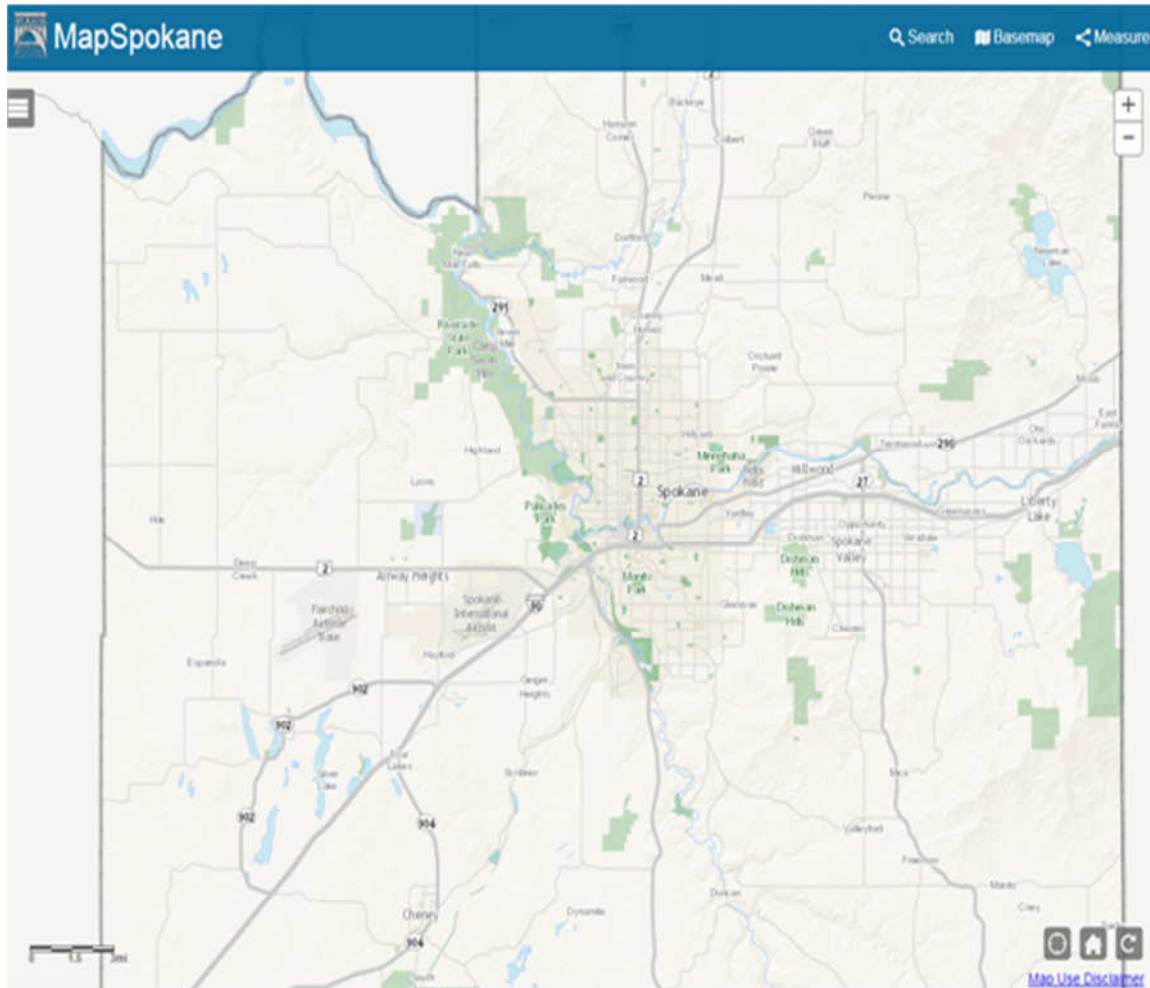




Geographic Information Systems (GIS) Mapping 101

Exploring the City of Spokane GIS mapping interface is a great starting place for a better understanding of the Planning and Zoning processes. This map can be viewed by following this link

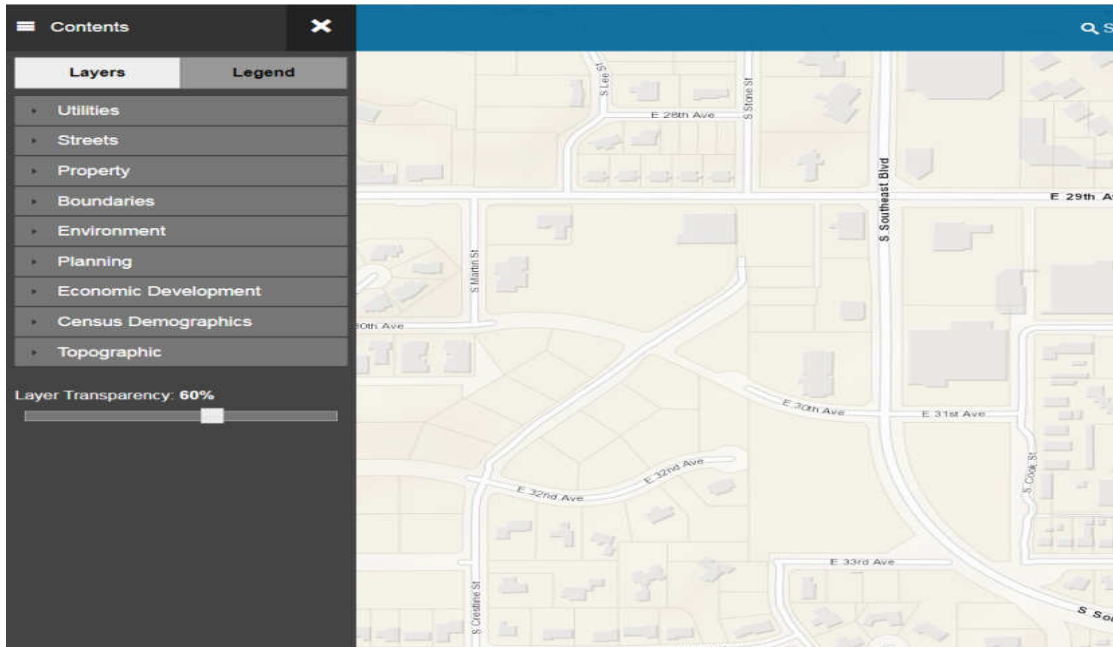
[\(https://maps.spokanecity.org/\)](https://maps.spokanecity.org/)



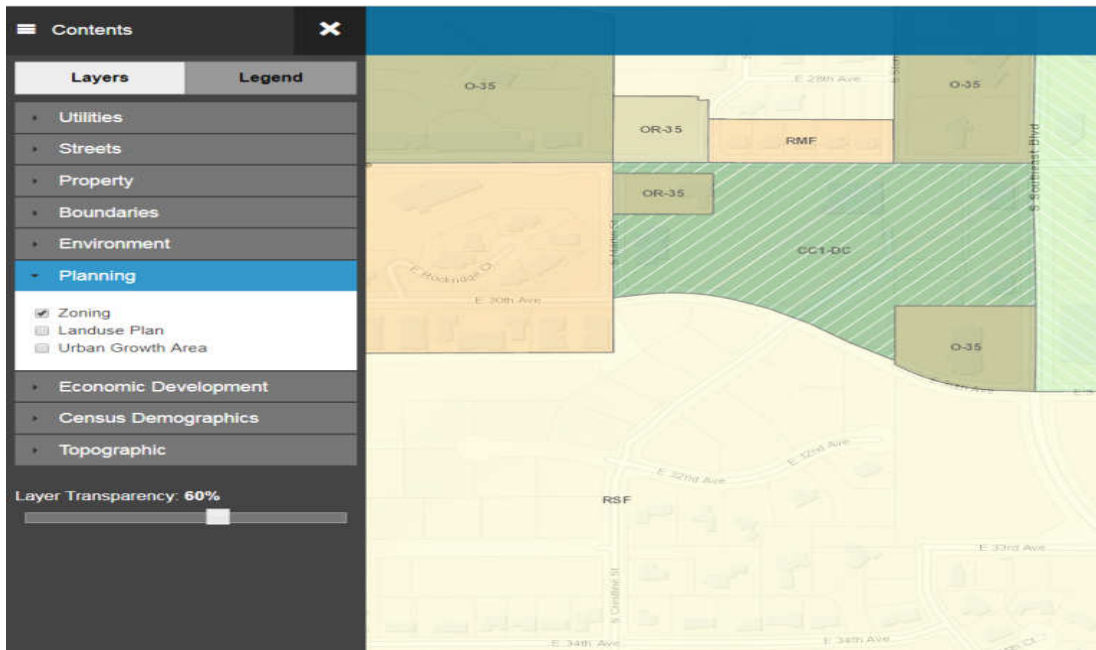
Following the link will bring you to this home page. The map can be zoomed in to specified areas of the City and the tab at the top left corner of the page will bring up a wide variety of potential layers that can be applied to the current map view.



City of Spokane, Office of Neighborhood Services



Once you are zoomed in to your desired location and the tab at the top left corner has been clicked, the available layer options pop up, which can be selected by clicking the tab.



Clicking the Planning tab and then selecting the zoning option shows the current zoning of the area of the map that is in the screen view. Selecting other options such as utilities, environment, or economic development bring up other viewing options on the map.